



HIVE

23A STOKES AVENUE
POOLE
BH15 2EB



presented by
MATTHEW WILSON
HIVE Partner for Poole/Broadstone
01202 122 002



Agent's introduction

This immaculately presented, recently built detached house is situated on a sought-after road in Oakdale. It's close to Poole town centre, highly regarded schools and award winning beaches.

Seller's introduction

We've loved living in this beautiful house and have enjoyed many summer evenings in the garden in the hot tub. It's a quiet road too, but we are really close to the shops, train station, parks and beaches.







Property highlights

High-specification throughout

Leicht German bespoke fitted kitchen with NEFF appliances

Pantry with plumbing for utilities

Living/dining room with bi-fold doors to the garden

Contemporary family bathroom and downstairs cloakroom

Westerly-facing garden with generous side access

Driveway with ample parking space

Remainder of new-build warranty





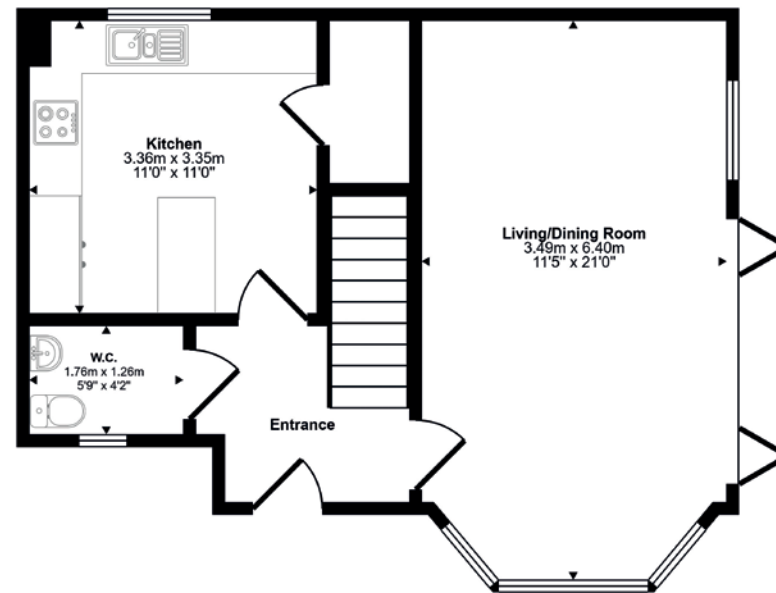
MATTHEW WILSON
HIVE Partner for Poole/Broadstone

This three bedroom home is located on a quiet and popular road, close to local shops and amenities. The area has great schooling options, including Stanley Green Infant Academy, Oakdale Junior School, St Edward's RC/CoE Secondary, and Poole High. Poole town centre and harbour is a short drive away, providing a wide range of shops, cafés, bars, restaurants and train links to London Waterloo.

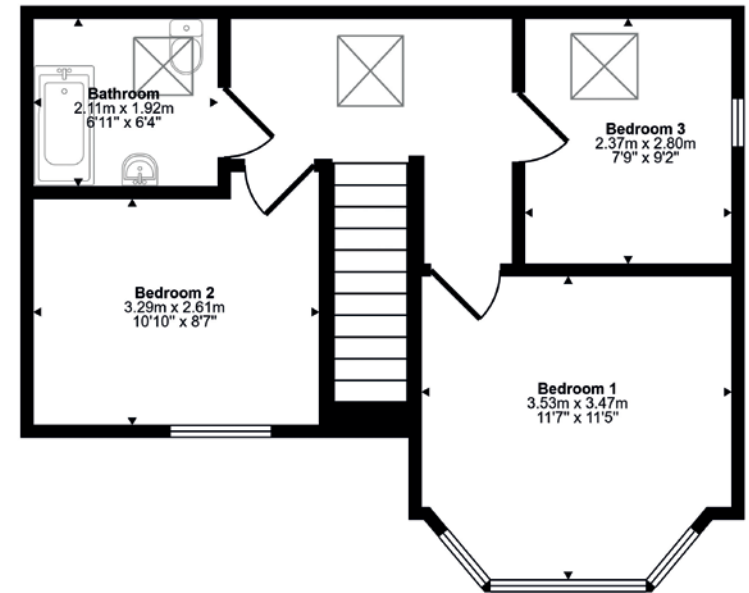


Scan the QR code for my latest property listings and social channels.

Approx Gross Internal Area
87 sq m / 941sq ft



Ground Floor
Approx 45 sq m / 481 sq ft



First Floor
Approx 43 sq m / 460 sq ft

This floorplan is only for illustrative purposes and is not to scale. Measurements of rooms, doors, windows, and any items are approximate and no responsibility is taken for any error, omission or mis-statement. Icons of items such as bathroom suites are representations only and may not look like the real items. Made with Made Snappy 360.





HIVE & Partners, Poole, Broadstone & Corfe Mullen c/o The Hive, Wilson House, 2 Lorne Park Road, Bournemouth BH1 1JN
01202 122 002 | www.hiveandpartners.co.uk